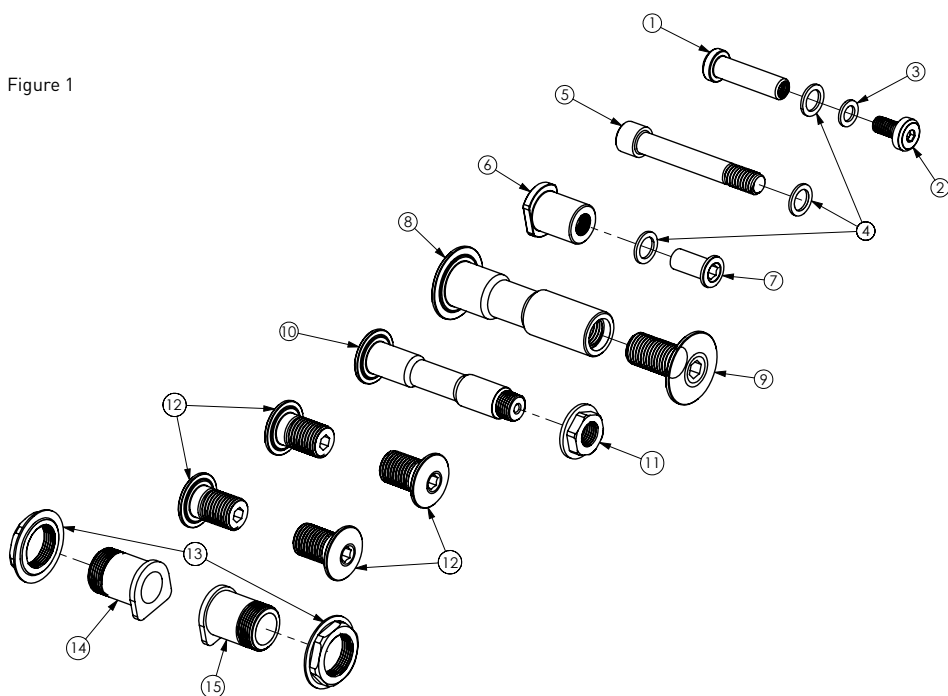


142/148 SPLIT PIVOT SERVICE KIT INSTRUCTIONS

SPEARFISH, REDPOINT, HORSETHIEF, PONY RUSTLER, & DEADWOOD

Figure 1



Item #	Description	Qty.
1	Forward Shock Pin	1
2	Forward Shock Bolt	1
3	Washer (8 x 12 x 1)	3
4	Washer (6 x 10 x 1)	1
5	Rear Shock Pin	1
6	Clevis Pin	1
7	Chainring Bolt (16 mm)	1
8	Main Pivot Pin	1
9	Main Pivot Bolt	1
10	Control Link Pin	1
11	Control Link Nut	1
12	Floating Pivot Bolt	4
13	Axle Nut	2
14	Axle Stud, non-driveside	1
15	Axle Stud, driveside	1

At Salsa, we believe that a sense of adventure makes life better. The bicycle can be so much more than just a bike; it's a path to new places, new people, and amazing experiences.

Thank you for your purchase. We hope it makes a good riding experience even better!

Salsa. Adventure by bike®.

This pivot service kit contains replacement hardware for Salsa suspension frames featuring Split Pivot® technology. Please thoroughly review this document, the included schematics, and charted details before beginning. SERVICE MUST BE PERFORMED BY A PROFESSIONAL MECHANIC WITH PROFESSIONAL TOOLS. We recommend your local Salsa dealer.

⚠ WARNING: CYCLING CAN BE DANGEROUS. BICYCLE PRODUCTS SHOULD BE INSTALLED AND SERVICED BY A PROFESSIONAL MECHANIC. NEVER MODIFY YOUR BICYCLE OR ACCESSORIES. READ AND FOLLOW ALL PRODUCT INSTRUCTIONS AND WARNINGS INCLUDING INFORMATION ON THE MANUFACTURER'S WEBSITE. INSPECT YOUR BICYCLE BEFORE EVERY RIDE. ALWAYS WEAR A HELMET.

Compatibility & Intended Use

This pivot service kit is compatible with the following Salsa suspension frames featuring Split Pivot technology

- Model year 2014+ Spearfish (all models and spec levels)
- Model year 2017+ Redpoint (all models and spec levels)
- Model year 2014+ Horsethief (all models and spec levels)
- Model year 2016+ Pony Rustler (all models and spec levels)
- Model year 2017+ Deadwood (all models and spec levels)

NOTE: Replacement bearings are NOT included in this kit. Replacement bearings must be purchased separately. For information regarding bearing size refer to figure 2-8 on the following pages that corresponds to the frame being serviced.

NOTE: A replacement derailleur hanger and replacement housing guides are NOT included in this kit. The items are available separately. See figures 2-8 for more details.

Tools Required

See column 7 in the tables of figures 2-8 for the tools necessary to service the pivots.

Installation

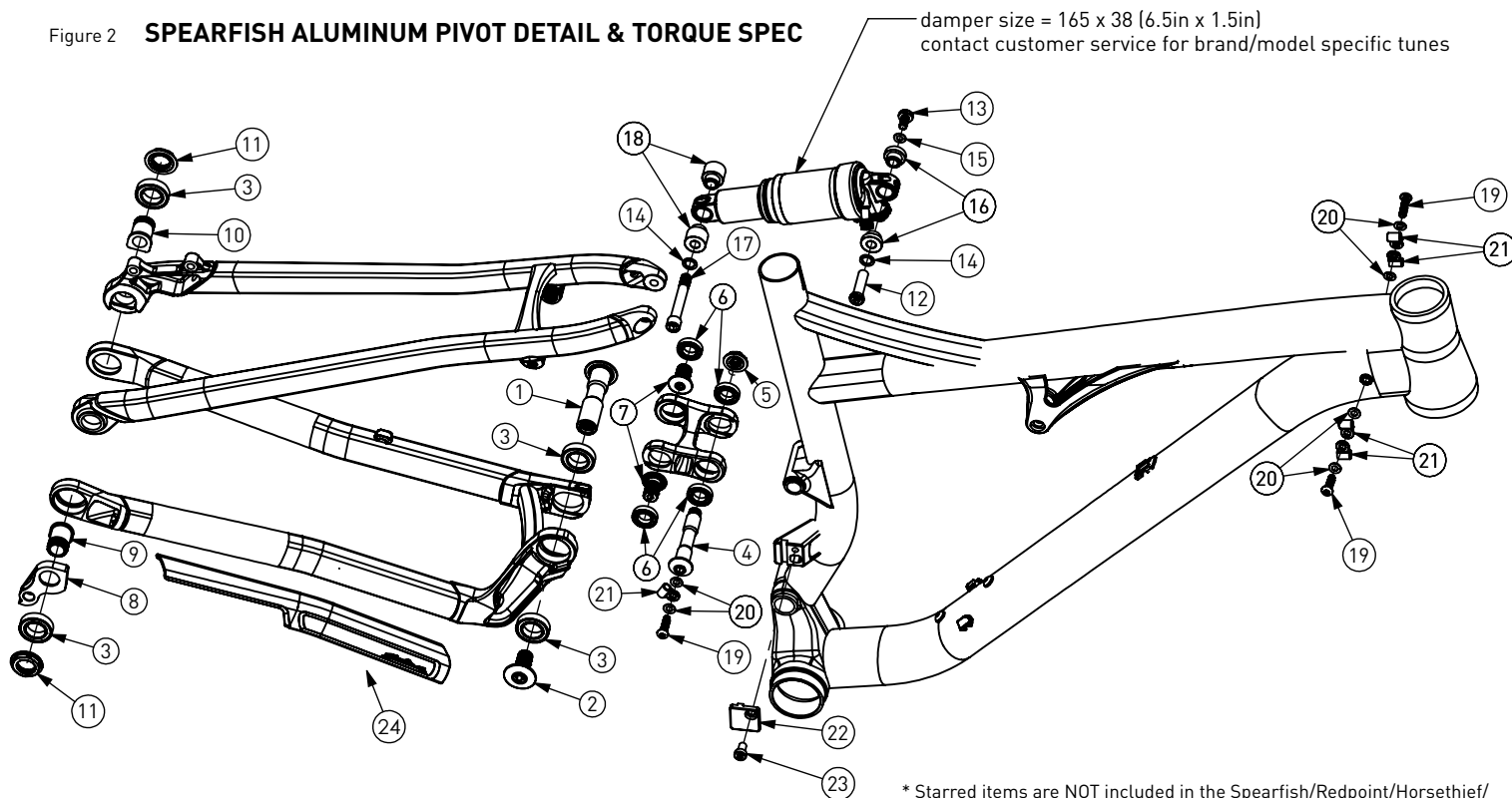
Before you begin working on the bike:

- Review figure 1 to ensure the pivot service kit came with all the correct parts. Please note that this kit includes parts for all models listed in the Compatibility section. As a result, some of the parts will not apply to the bike model service is being performed on. In the unlikely event that any parts are missing, contact your local Salsa Dealer or Salsa Customer Service
- Review figures 2-8 (depending on frame model) and the accompanying table. Details regarding the tools and consumables (grease, thread lock) required to properly service the pivots of the Salsa Split Pivot frame can be found in these exploded views and the accompanying tables. Do not attempt to service the frame pivots if you lack any of these tools or supplies
- A bearing puller, bearing press, and knowledge of how to properly use these tools are required to change the cartridge bearings in a Salsa Split Pivot frame. If you do not have these tools, or do not know how to properly remove and install cartridge bearings with them, do not attempt to replace the bearings in the frame
- A torque wrench is required to service the pivots of Salsa Split Pivot frames. If you do not have a torque wrench or knowledge of how to properly operate it, do not attempt to service the pivots of the frame

142/148 SPLIT PIVOT SERVICE KIT INSTRUCTIONS

SPEARFISH, REDPOINT, HORSETHIEF, PONY RUSTLER, & DEADWOOD

Figure 2 **SPEARFISH ALUMINUM PIVOT DETAIL & TORQUE SPEC**



OD = outer diameter, unthreaded portion
ID = inner diameter, threaded or unthreaded

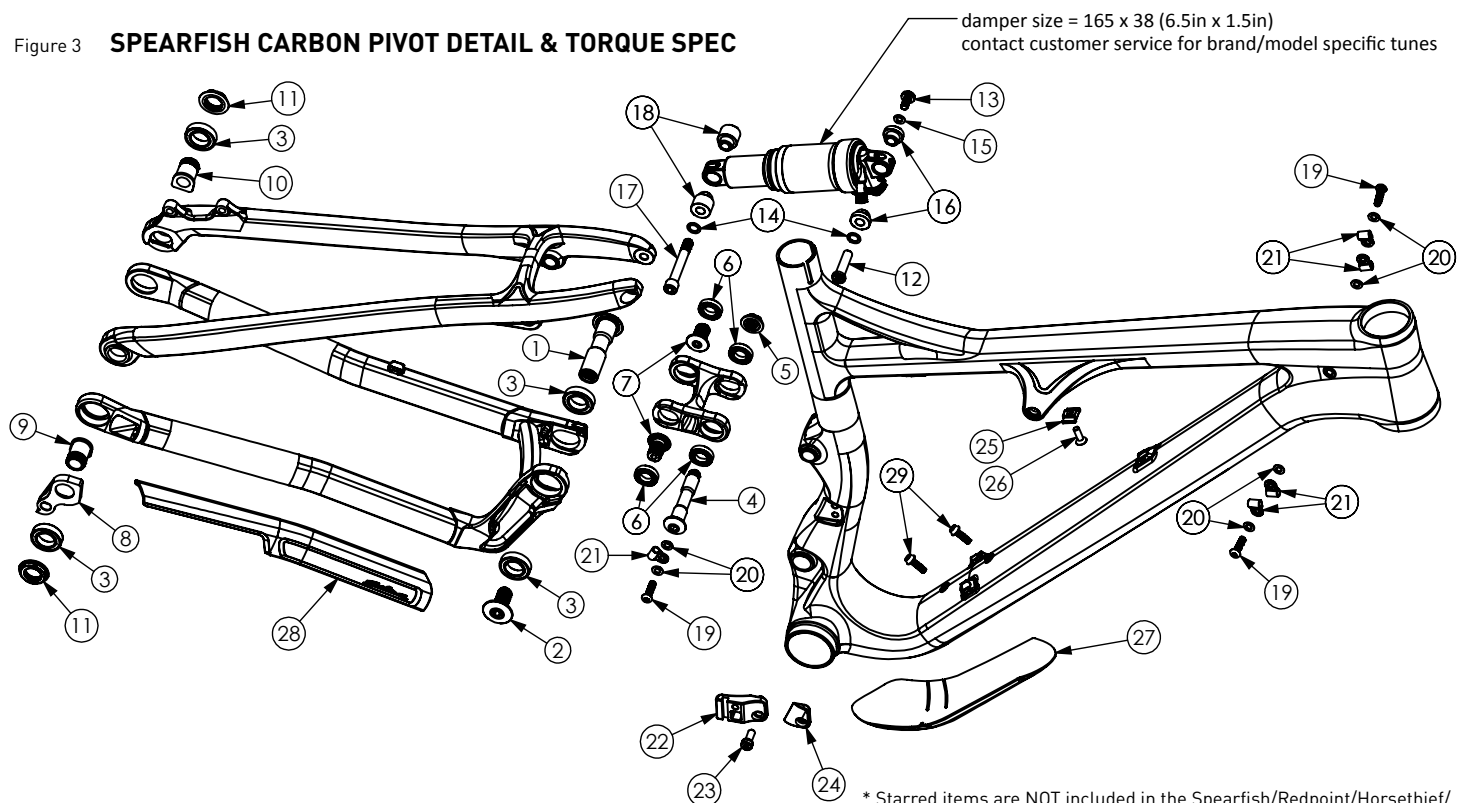
* Starred items are NOT included in the Spearfish/Redpoint/Horsethief/
Pony Rustler Split Pivot Service Kit. They must be ordered separately.
Measurements are in millimeters unless noted otherwise.

Item #	Qty.	Description	Size/Spec	Preparation	Torque	Tool Required	Notes
1	1	Main Pivot Pin	ø17-66L	Grease OD only	---	8 Hex Key	---
2	1	Main Pivot Bolt	M1 x 1.25 - 25L	Loctite 242 Blue	20 Nm/14.7 ft-lb/177 in-lb	6 Hex Key	---
3*	4	Bearing - MR17287	17 x 28 x 7w	Grease for PressFit	---	Bearing Press/Puller	Sold separately [BB1728]
4	1	Control Link Pin	ø12-59L	Grease OD only	---	6 Hex Key	---
5	1	Control Link Nut	M10 x 1.0	Loctite 242 Blue	7 Nm/5 ft-lb/62 in-lb	15 mm Wrench/Socket	---
6*	6	Bearing - 6801	12 x 21 x 5w	Grease for PressFit	---	Bearing Press/Puller	Sold separately [BB8801]
7	2	Floating Pivot Bolt	M12 x 1.25 - 18L	Loctite 242 Blue	13 Nm/9.6 ft-lb/115 in-lb	5 Hex Key	Only 2/4 from kit are used for Spearfish
8*	1	Hanger	Split Pivot	---	---	---	Sold separately [FS2322]
9	1	Axle Stud, driveside	M12 x 1.75	Grease OD & ID	---	---	Compatible thru-axle size is ø12, L = 182, TP = 1.75, TL = 20
10	1	Axle Stud, non-driveside	---	Grease OD & ID	---	---	
11	2	Axle Nut	M17 x 1.0	Loctite 242 Blue	18 Nm/13.3 ft-lb/160 in-lb	22 mm Cone Wrench/Socket	Socket top cap tool available separately
12	1	Forward Shock Pin	ø8 x 30L	Grease OD only	---	5 Hex Key	---
13	1	Forward Shock Bolt	M6 x 1.0 - 1L	Loctite 242 Blue	5 Nm/3.7 ft-lb/44 in-lb	4 Hex Key	---
14	2	Washer	8 x 12 x 1	---	---	---	---
15	1	Washer	6 x 10 x 1	---	---	---	---
16*	1 Kit	Forward Shock Reducer	8 x 22	Per Shock Manf.	---	Per Shock Manf.	Sold separately, per shock manf.
17	1	Rearward Shock Pin	ø8-55L [M8 x 1.25]	Grease OD only, threads = Loctite 242 Blue	10 Nm/7.4 ft-lb/88 in-lb	6 Hex Key	Spearfish models only
18*	1 Kit	Rearward Shock Reducer	8 x 38	Per Shock Manf.	---	Per Shock Manf.	Sold separately, per shock manf.
19*	3	Button-Head Cap Screw	M5 x 0.8 - 20L	Loctite 42 Blue	None	T25	Replacement kit sold separately
20*	5	Washer	M5 Typical	---	---	---	
21*	5	Housing Guide Clip	YF-W01	---	---	---	Sold separately
22*	1	FD Cover Plate	---	---	---	---	
23*	1	Socket Head Cap Screw	M6 x 1.0 - 10L	Grease	2 Nm/1.5 ft-lb/18 in-lb	4 Hex Key	Sold separately
24*	1	Chainstay Protector	VLF-213	Clean frame	---	---	

142/148 SPLIT PIVOT SERVICE KIT INSTRUCTIONS

SPEARFISH, REDPOINT, HORSETHIEF, PONY RUSTLER, & DEADWOOD

Figure 3 SPEARFISH CARBON PIVOT DETAIL & TORQUE SPEC



OD = outer diameter, unthreaded portion
ID = inner diameter, threaded or unthreaded

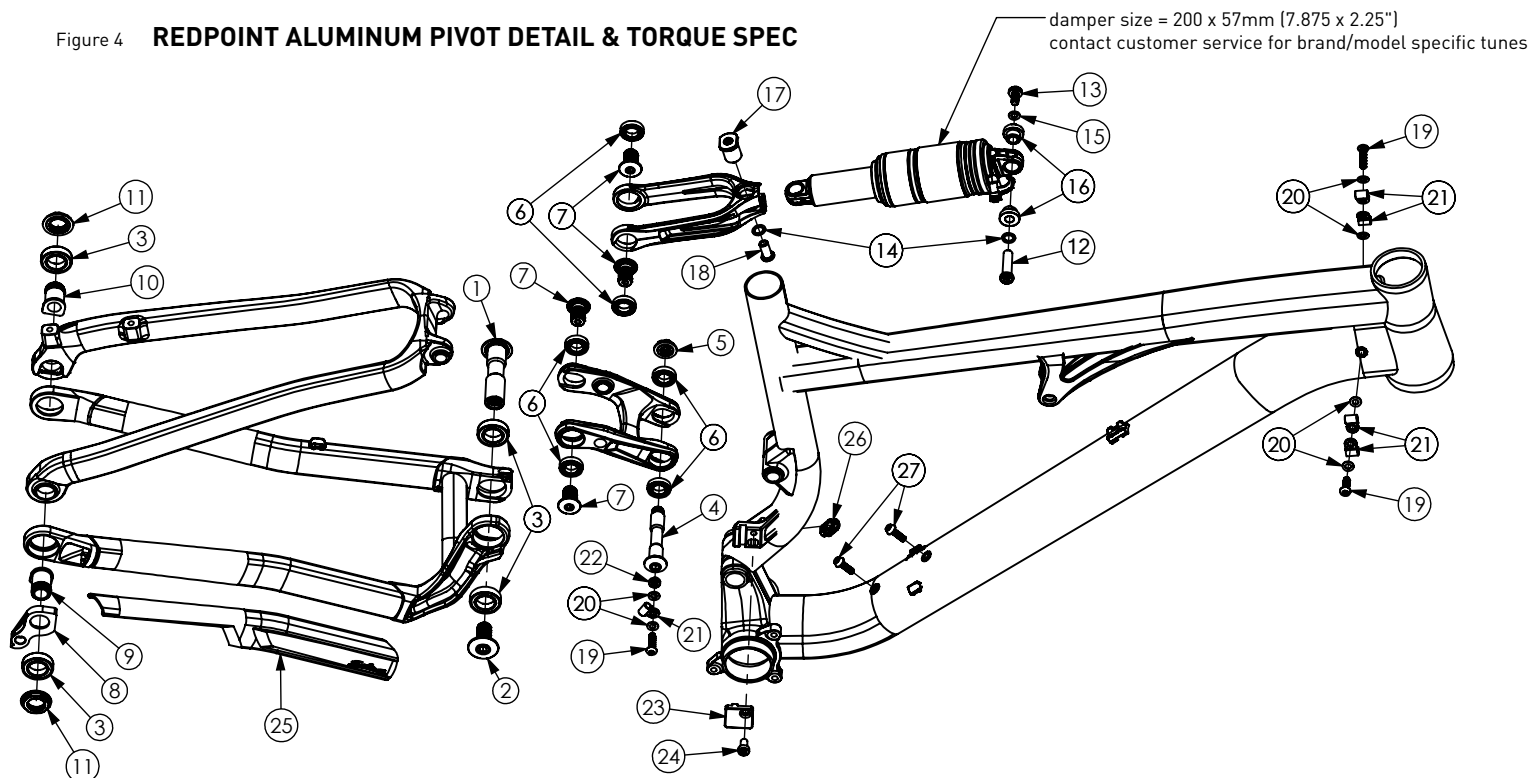
* Starred items are NOT included in the Spearfish/Redpoint/Horsethief/
Pony Rustler Split Pivot Service Kit. They must be ordered separately.
Measurements are in millimeters unless noted otherwise.

Item #	Qty.	Description	Size/Spec	Preparation	Torque	Tool Required	Notes
1	1	Main Pivot Pin	ø17 - 66L	Grease OD only -	--	8 Hex Key	---
2	1	Main Pivot Bolt	M12 x 1.25 - 25L	Loctite 242 Blue	20 Nm/14.7 ft-lb/177 in-lb	6 Hex Key	---
3*	4	Bearing - MR17287	17 x 28 x 7w	Grease for PressFit	---	Bearing Press/ Bearing Puller	Sold separately (BB17287)
4	1	Control Link Pin	ø12 - 59L	Grease OD only	---	6 Hex Key	---
5	1	Control Link Nut	M10 x 1.0	Loctite 242 Blue	7 Nm/5 ft-lb/62 in-lb	15 mm Wrench/ Socket	---
6*	6	Bearing - 6801	12 x 21 x 5w	Grease for PressFit	---	Bearing Press/ Bearing Puller	Sold separately (BB8801)
7	2	Floating Pivot Bolt	M12 x 1.25 - 18L	Loctite 242 Blue	13 Nm/9.6 ft-lb/115 in-lb	5 Hex Key	Only 2/4 from kit are used for Spearfish
8*	1	Hanger	Split Pivot	---	---	---	Sold separately (FS2322)
9	1	Axle Stud, driveside	M12 x 1.75	Grease OD & ID	---	---	Compatible thru-axle size is ø12, L=182, TP=1.75, TL=20
10	1	Axle Stud, non-driveside	---	Grease OD & ID	---	---	---
11	2	Axle Nut	M17 x 1.0	Loctite 242 Blue	16 Nm/11.8 ft-lb/141 in-lb	22 mm Cone Wrench/Socket	Socket Top Cap Tool available separately
12	1	Forward Shock Pin	ø8 x 30L	Grease OD Only	---	5 Hex Key	---
13	1	Forward Shock Bolt	M6 x 1.0 - 12L	Loctite 242 Blue	5 Nm/3.7 ft-lb/44 in-lb	4 Hex Key -	---
14	2	Washer	8 x 12 x 1	---	---	---	---
15	1	Washer	6 x 10 x 1	---	---	---	---
16*	1 Kit	Forward Shock Reducer	8 x 22	Per Shock Manf.	---	Per Shock Manf.	Sold separately, per shock manf.
17	1	Rearward Shock Pin	ø8-55L, M8x1.25	Grease OD only, threads = Loctite Blue	7 Nm/5 ft-lb/62 in-lb	---	Spearfish model only
18*	1 Kit	Rearward Shock Reducer	8 x 38	Per Shock Manf.	---	Per Shock Manf.	Sold separately, per shock manf.
19*	3	Button-Head Cap Screw	M5 x 0.8 - 20L	Loctite 242 Blue	Not specified	T25	Replacement kit sold separately
20*	5	Washer	M5 typical	---	---	---	---
21*	6	Housing Guide Clip	YF-W01	---	---	---	---
22*	1	FD Bracket	26 Offset	---	---	---	---
23*	1	Low-Head Socket Cap Screw	M6 x 1.0 - 10L	Grease	5 Nm/3.7 ft-lb/44 in-lb	4 Hex Key	Sold separately
24*	1	FD Blank Cover	SF/HT Carbon	---	---	---	---
25*	1	T/T Housing Guide	---	---	---	---	Sold separately
26*	1	Flat-Head Cap Screw	M5 x 0.8 - 16L	Grease	4 Nm/3 ft-lb/35 in-lb	3 Hex Key	Sold separately
27*	1	Downtube Protector	VLF-214	Clean frame	---	---	Sold separately
28*	1	Chainstay Protector	VLF-213	Clean frame	---	---	Sold separately
29*	2	Bottle Cage Bolts	M5 x 0.8 - 20L	Grease	4 Nm/3 ft-lb/35 in-lb	4 Hex Key	Sold separately

142/148 SPLIT PIVOT SERVICE KIT INSTRUCTIONS

SPEARFISH, REDPOINT, HORSETHIEF, PONY RUSTLER, & DEADWOOD

Figure 4 REDPOINT ALUMINUM PIVOT DETAIL & TORQUE SPEC



OD = outer diameter, unthreaded portion
ID = inner diameter, threaded or unthreaded

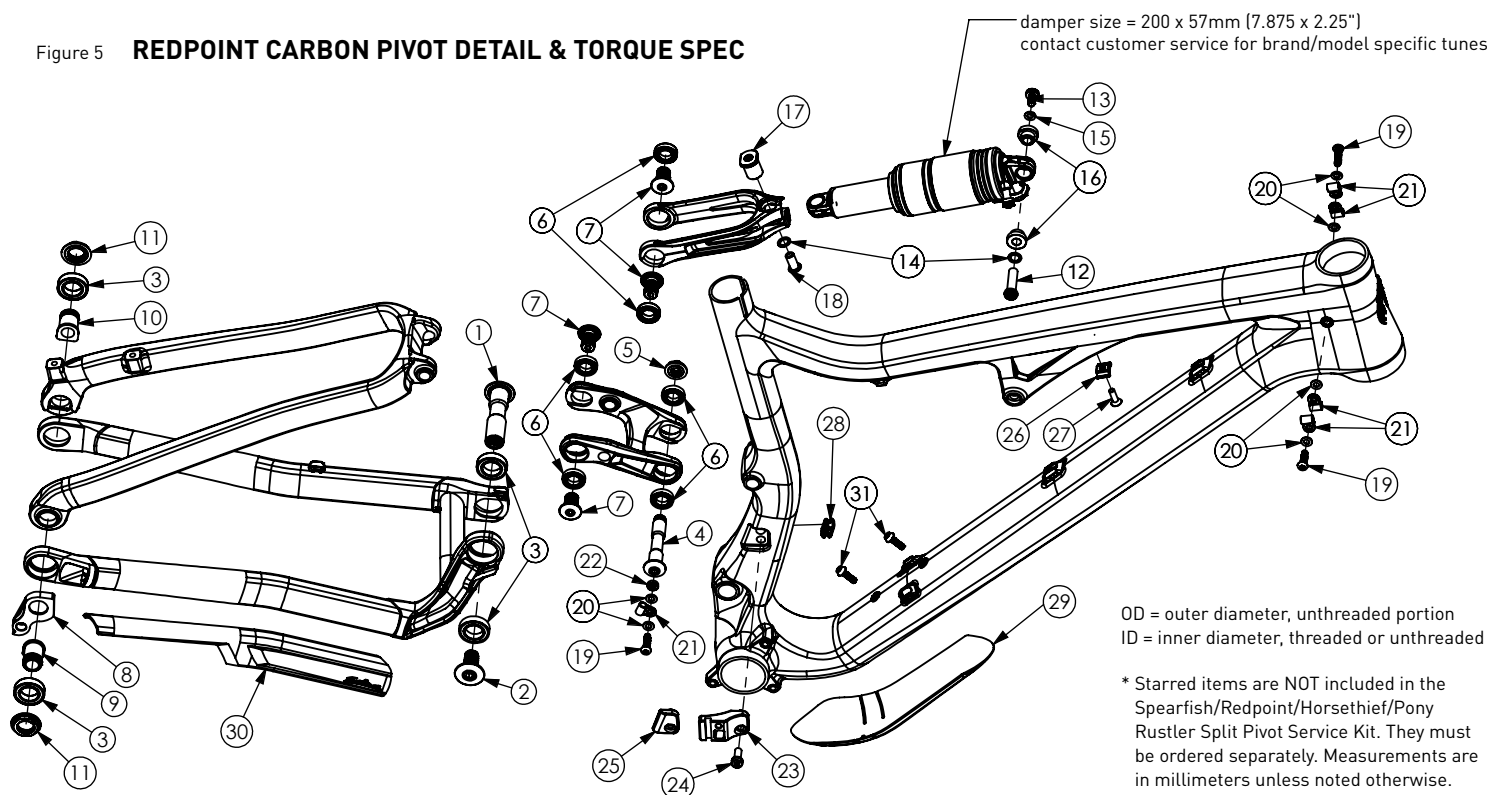
* Starred items are NOT included in the Spearfish/Redpoint/Horsethief/
Pony Rustler Split Pivot Service Kit. They must be ordered separately.
Measurements are in millimeters unless noted otherwise.

Item #	Qty.	Description	Size/Spec	Preparation	Torque	Tool Required	Notes
1	1	Main Pivot Pin	ø17 - 66L	Grease OD only	---	8 Hex Key	---
2	1	Main Pivot Bolt	M12x1.25 - 25L	Loctite 242 Blue	20 Nm/14.7 ft-lb/177 in-lb	6 Hex Key	---
3*	4	Bearing - MR17287	17 x 28 x 7w	Grease for PressFit	---	Bearing Press/ Bearing Puller	Sold separately (BB1728)
4	1	Control Link Pin	ø12 - 59L	Grease OD only	---	6 Hex Key	---
5	1	Control Link Nut	M10 x 1.0	Loctite 242 Blue	7 Nm/5 ft-lb/62 in-lb	15 mm Wrench/Socket	---
6*	6	Bearing - 6801	12 x 21 x 5w	Grease for PressFit	---	Bearing Press/ Bearing Puller	Sold separately (BB8801)
7	4	Floating Pivot Bolt	M12x1.25 - 18L	Loctite 242 Blue	13 Nm/9.6 ft-lb/115 in-lb	5 Hex Key	---
8*	1	Hanger	Split Pivot	---	---	---	Sold separately (FS2322)
9	1	Axle Stud, driveside	M12x1.75	Grease OD & ID	---	---	Compatible thru-axle size is ø12, L=188, TP=1.75, TL=20
10	1	Axle Stud, non-driveside	---	Grease OD & ID	---	---	---
11	2	Axle Nut	M17x1.0	Loctite 242 Blue	16 Nm/11.8 ft-lb/141 in-lb	22 mm Cone Wrench/ Socket	Socket Top Cap Tool available separately
12	1	Forward Shock Pin	ø8 x 30L	Grease OD only -	--	5 Hex Key	---
13	1	Forward Shock Bolt	M6x1.0 - 12L	Loctite 242 Blue	5 Nm/3.7 ft-lb/44 in-lb	4 Hex Key	---
14	2	Washer	8 x 12 x 1	---	---	---	---
15	1	Washer	6 x 10 x 1	---	---	---	---
16*	1	Kit Forward Shock Reducer	8 x 22	Per Shock Manf.	---	Per Shock Manf.	Sold separately, per shock Manf.
17	1	Clevis Pin	ø15 - 18L	Grease OD only	---	---	Redpoint model only
18	1	Chainring Bolt	M8 x 0.75 - 16L	Loctite 242 Blue	10 Nm/7.4 ft-lb/88 in-lb	5 Hex Key	Redpoint model only
19*	3	Button-Head Cap Screw	M5x0.8 - 20L	Loctite 242 Blue	not specified	T25	Kit sold separately
20*	6	Washer	M5 typical	---	---	---	
21*	5	Housing Guide Clip	YF-W01	---	---	---	
22*	1	Spacer	5 x 10 x 3w	---	---	---	
23*	1	FD Cover Plate	---	---	---	---	---
24*	1	Low-Head Socket Cap Screw	M6x1.0 - 10L	Grease	2 Nm/1.5 ft-lb/18 in-lb	4 Hex Key	Sold separately
25*	1	Chainstay Protector	VLF-213	Clean frame	---	---	Sold separately
26*	1	Housing Port Grommet	PLG-00-902	---	---	Flat blade screw drive/ Pliers	Sold separately
27*	2	Bottle Cage Bolts	M5x0.8 - 20L	Grease	4 Nm/3 ft-lb/35 in-lb	4 Hex Key	Sold separately

142/148 SPLIT PIVOT SERVICE KIT INSTRUCTIONS

SPEARFISH, REDPOINT, HORSETHIEF, PONY RUSTLER, & DEADWOOD

Figure 5 REDPOINT CARBON PIVOT DETAIL & TORQUE SPEC

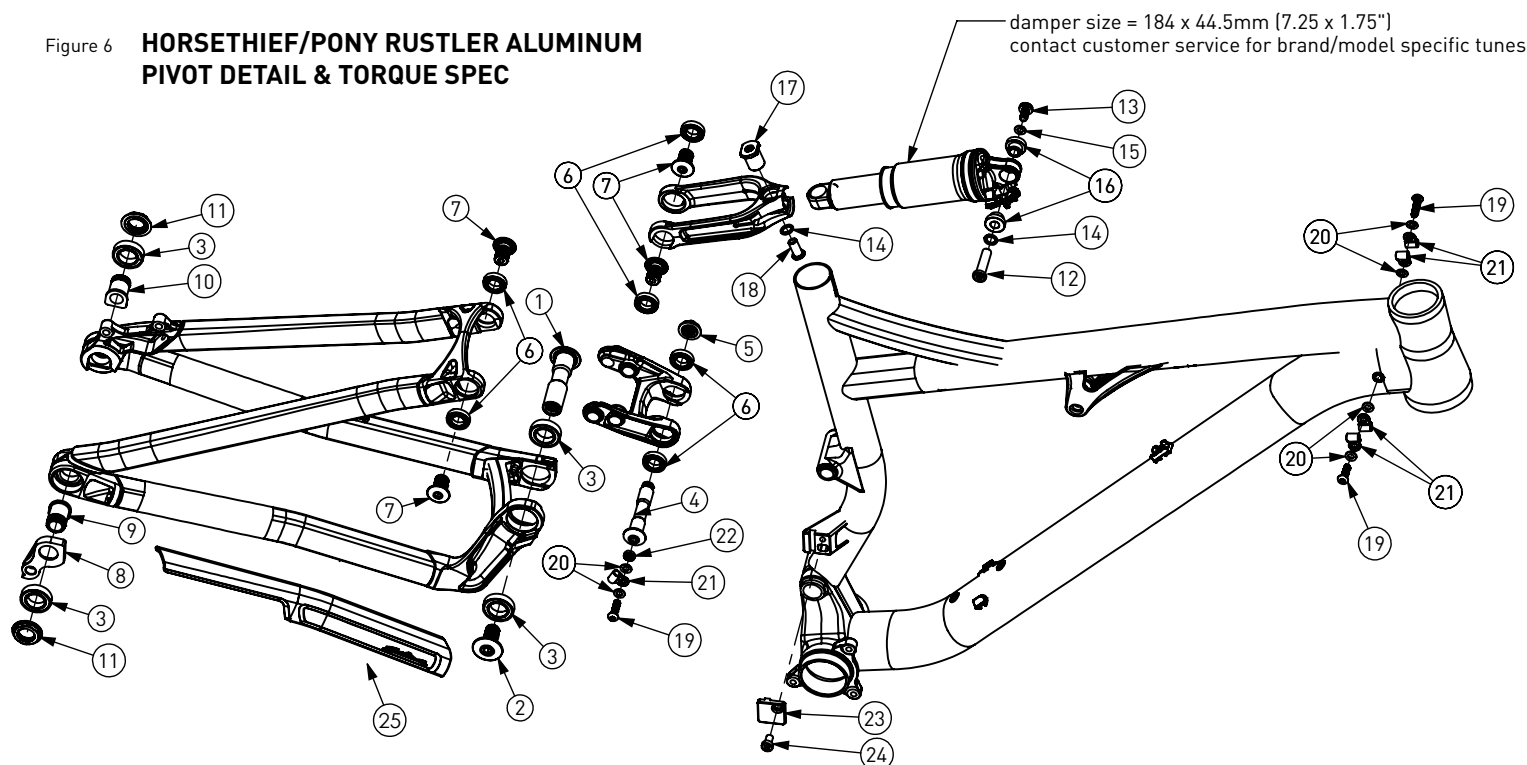


Item #	Qty.	Description	Size/Spec	Preparation	Torque	Tool Required	Notes
1	1	Main Pivot Pin	ø17 - 66L	Grease OD only	---	8 Hex Key	---
2	1	Main Pivot Bolt	M12x1.25 - 25L	Loctite 242 Blue	20 Nm/14.7 ft-lb/177 in-lb	6 Hex Key	---
3*	4	Bearing - MR17287	17 x 28 x 7w	Grease for PressFit	---	Bearing Press/ Bearing Puller	Sold separately (BB1728)
4	1	Control Link Pin	ø12 - 59L	Grease OD only	---	6 Hex Key	---
5	1	Control Link Nut	M10 x 1.0	Loctite 242 Blue	7 Nm/5 ft-lb/62 in-lb	15 mm Wrench/ Socket	---
6*	6	Bearing - 6801	12 x 21 x 5w	Grease for PressFit	---	Bearing Press/ Bearing Puller	Sold separately (BB8801)
7	4	Floating Pivot Bolt	M12x1.25 - 18L	Loctite 242 Blue	13 Nm/9.6 ft-lb/115 in-lb	5 Hex Key	---
8*	1	Hanger	Split Pivot	---	---	---	Sold separately (FS2322)
9	1	Axle Stud, driveside	M12x1.75	Grease OD & ID	---	---	Compatible thru-axle size is ø12, L=188, TP=1.75, TL=20
10	1	Axle Stud, non-driveside	---	Grease OD & ID	---	---	---
11	2	Axle Nut	M17x1.0	Loctite 242 Blue	16 Nm/11.8 ft-lb/141 in-lb	22 mm Cone Wrench/Socket	Socket top cap tool available separately
12	1	Forward Shock Pin	ø8 x 30L	Grease OD only	---	5 Hex Key	---
13	1	Forward Shock Bolt	M6x1.0 - 12L	Loctite 242 Blue	5 Nm/3.7 ft-lb/44 in-lb	4 Hex Key	---
14	2	Washer	8 x 12 x 1	---	---	---	---
15	1	Washer	6 x 10 x 1	---	---	---	---
16*	1 Kit	Forward Shock Reducer	8 x 22	Per shock manf.	---	Per Shock Manf.	Sold separately, per shock manf..
17	1	Clevis Pin	ø15 - 18L	Grease OD only	---	---	Horsethief only
18	1	Chainring Bolt	M8 x 0.75 - 16L	Loctite 242 Blue	10 Nm/7.4 ft-lb/88 in-lb	5 Hex Key	Horsethief only
19*	3	Button-Head Cap Screw	M5x0.8 - 20L	Loctite 242 Blue	not specified	T25	Kit sold separately
20*	6	Washer	M5 typical	---	---	---	
21*	5	Housing Guide Clip	YF-W01	---	---	---	
22*	1	Spacer	5 x 10 x 3w	---	---	---	
23*	1	FD Bracket	29 offset	---	---	---	Sold separately
24*	1	Low-Head Socket Cap Screw	M6x1.0 - 10L	Grease	5 Nm/3.7 ft-lb/44 in-lb	4 Hex Key	
25*	1	FD Blank Cover	Redpoint Cbn	---	---	---	Sold separately
26*	1	T/T Housing Guide	---	---	---	---	
27*	1	Flat-Head Cap Screw	M5x0.8 - 16L	Grease	4 Nm/3 ft-lb/35 in-lb	3 Hex Key	Sold separately
28*	1	Housing Port Grommet	PLG-00-902	---	---	Flat Blade Screwdriver/Pliers	
29*	1	Downtube Protector	VLF-214	Clean frame	---	---	Sold separately
30*	1	Chainstay Protector	VLF-213	Clean frame	---	---	Sold separately
31*	2	Bottle Cage Bolts	M5x0.8 - 20L	Grease	4Nm/3 ft-lb/35 in-lb	4 Hex Key	Sold separately

142/148 SPLIT PIVOT SERVICE KIT INSTRUCTIONS

SPEARFISH, REDPOINT, HORSETHIEF, PONY RUSTLER, & DEADWOOD

Figure 6 **HORSETHIEF/PONY RUSTLER ALUMINUM PIVOT DETAIL & TORQUE SPEC**



OD = outer diameter, unthreaded portion
ID = inner diameter, threaded or unthreaded

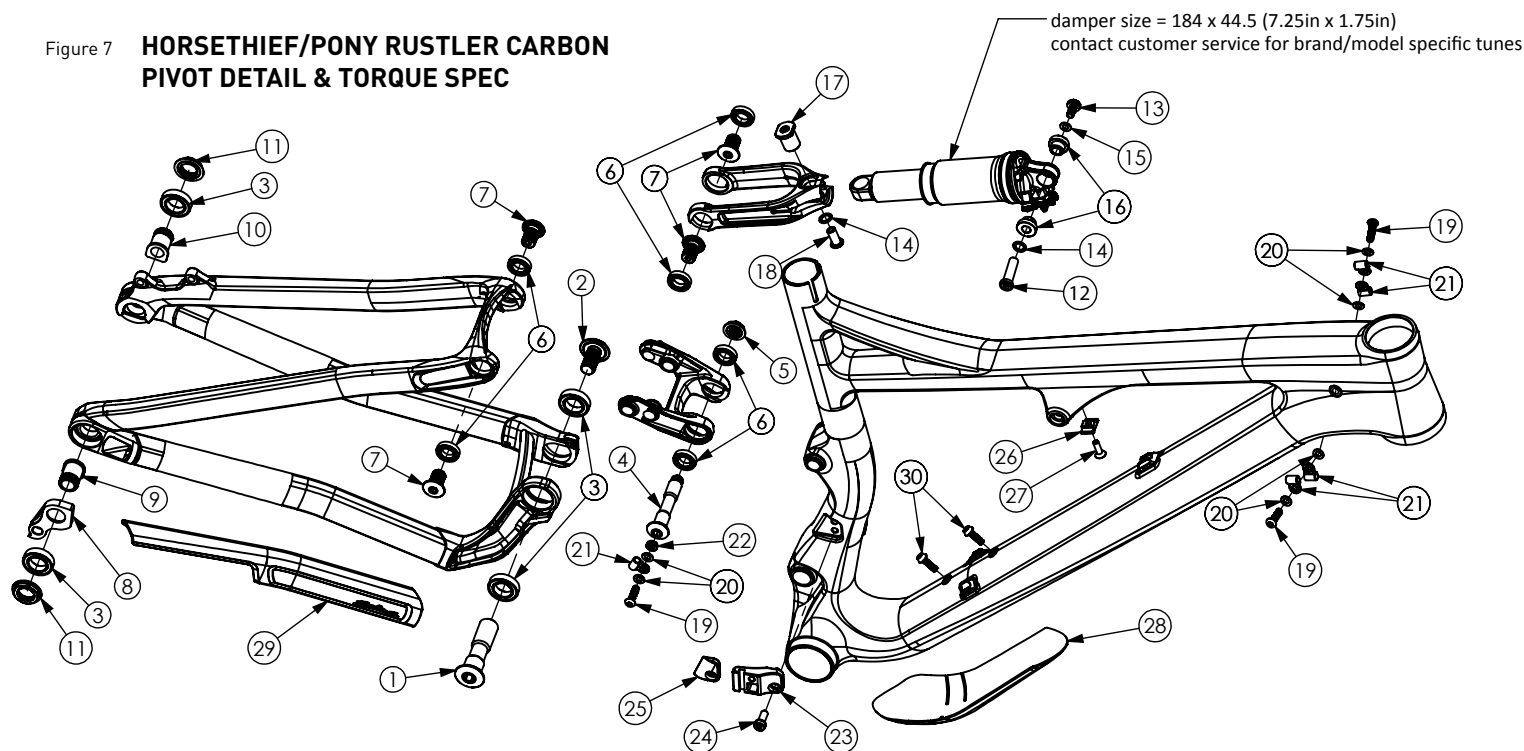
* Starred items are NOT included in the Spearfish/Redpoint/Horsethief/Pony Rustler Split Pivot Service Kit. They must be ordered separately. Measurements are in millimeters unless noted otherwise.

Item #	Qty.	Description	Size/Spec	Preparation	Torque	Tool Required	Notes
1	1	Main Pivot Pin	ø17-66L	Grease OD only	---	8 Hex Key	---
2	1	Main Pivot Bolt	M12 x 1.25 - 25L	Loctite 242 Blue	20 Nm/14.7 ft-lb/177 in-lb	6 Hex Key	---
3*	4	Bearing - MR17287	17 x 28 x 7w	Grease for PressFit	---	Bearing Press/Puller	Sold separately (BB1728)
4	1	Control Link Pin	ø12-59L	Grease OD only	---	6 Hex Key	---
5	1	Control Link Nut	M10 x 1.0	Loctite 242 Blue	7 Nm/5 ft-lb/62 in-lb	15 mm Wrench/Socket	---
6*	6	Bearing - 6801	12 x 21 x 5w	Grease for PressFit	---	Bearing Press/Puller	Sold separately (BB8801)
7	4	Floating Pivot Bolt	M12 x 1.25 - 18L	Loctite 242 Blue	13 Nm/9.6 ft-lb/115 in-lb	5 Hex Key	---
8*	1	Hanger	Split Pivot	---	---	---	Sold separately (FS2322)
9	1	Axle Stud, driveside	M12 x 1.75	Grease OD & ID	---	---	Compatible thru-axle size is ø12, L = 182, TP = 1.75, TL = 20
10	1	Axle Stud, non-driveside	---	Grease OD & ID	---	---	
11	2	Axle Nut	M17 x 1.0	Loctite 242 Blue	18 Nm/13.3 ft-lb/160 in-lb	22 mm Cone Wrench/Socket	
12	1	Forward Shock Pin	ø8 x 30L	Grease OD only	---	5 Hex Key	---
13	1	Forward Shock Bolt	M6 x 1.0 - 1L	Loctite 242 Blue	5 Nm/3.7 ft-lb/44 in-lb	4 Hex Key	---
14	2	Washer	8 x 12 x 1	---	---	---	---
15	1	Washer	6 x 10 x 1	---	---	---	---
16*	1 Kit	Forward Shock Reducer	8 x 22	Per shock manf.	---	Per Shock Manf.	Sold separately
17	1	Clevis Pin	ø15-18L	Grease OD only	---	---	Horsethief models only
18	1	Chainring Bolt	M8 x 0.75 - 16L	Loctite 242 Blue	10 Nm/7.4 ft-lb/88 in-lb	5 Hex Key	
19*	3	Button-Head Cap Screw	M5 x 0.8 - 20L	Loctite 42 Blue	Not Specified	T25	Replacement kit sold separately
20*	5	Washer	M5 Typical	---	---	---	
21*	6	Housing Guide Clip	YF-W01	---	---	---	
22*	1	Spacer	5 x 10 x 3w	---	---	---	Sold separately
23*	1	FD Cover Plate	---	---	---	---	
24*	1	Socket Head Cap Screw	M6 x 1.09 - 10L	Grease	2 Nm/1.5 ft-lb/18 in-lb	4 Hex Key	
25*	1	Chainstay Protector	VLF-213	Clean frame	---	---	---

142/148 SPLIT PIVOT SERVICE KIT INSTRUCTIONS

SPEARFISH, REDPOINT, HORSETHIEF, PONY RUSTLER, & DEADWOOD

Figure 7 **HORSETHIEF/PONY RUSTLER CARBON PIVOT DETAIL & TORQUE SPEC**



OD = outer diameter, unthreaded portion
ID = inner diameter, threaded or unthreaded

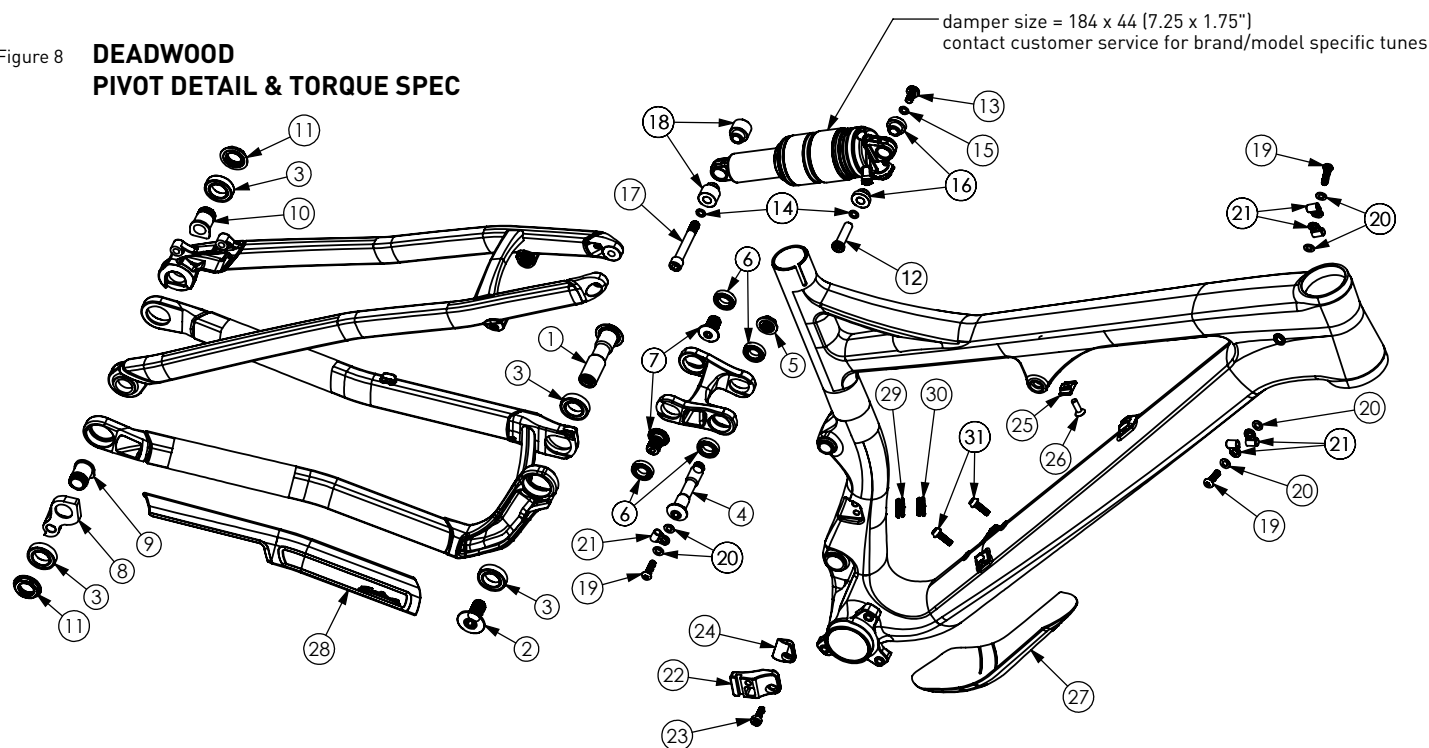
* Starred items are NOT included in the Spearfish/Redpoint/Horsethief/
Pony Rustler Split Pivot Service Kit. They must be ordered separately.
Measurements are in millimeters unless noted otherwise.

Item #	Qty.	Description	Size/Spec	Preparation	Torque	Tool Required	Notes
1	1	Main Pivot Pin	ø17 - 66L	Grease OD only	---	8 Hex Key	---
2	1	Main Pivot Bolt	M12 x 1.25 - 25L	Loctite 242 Blue	20 Nm/14.7 ft-lb/177 in-lb	6 Hex Key	---
3*	4	Bearing - MR17287	17 x 28 x 7w	Grease for PressFit	---	Bearing Press/Bearing Puller	Sold separately (BB1728)
4	1	Control Link Pin	ø12 - 59L	Grease OD only	---	6 Hex Key	---
5	1	Control Link Nut	M10 x 1.0	Loctite 242 Blue	7 Nm/5 ft-lb/62 in-lb	15 mm Wrench/Socket -	---
6*	6	Bearing - 6801	12 x 21 x 5w	Grease for PressFit	---	Bearing Press/Bearing Puller	Sold separately (BB8801)
7	4	Floating Pivot Bolt	M12 x 1.25 - 18L	Loctite 242 Blue	13 Nm/9.6 ft-lb/115 in-lb	5 Hex Key	---
8*	1	Hanger	Split Pivot	---	---	---	Sold separately (FS2322)
9	1	Axle Stud, driveside	M12 x 1.75	Grease OD & ID	---	---	Compatible thru-axle size is ø12, L = 182, TP = 1.75, TL = 20
10	1	Axle Stud, non-driveside	---	Grease OD & ID	---	---	---
11	2	Axle Nut	M17 x 1.0	Loctite 242 Blue	16 Nm/11.8 ft-lb/141 in-lb	22 mm Cone Wrench/Socket	Socket Top Cap Tool available separately
12	1	Forward Shock Pin	ø8 x 30L	Grease OD only	---	5 Hex Key	---
13	1	Forward Shock Bolt	M6 x 1.0 - 12L	Loctite 242 Blue	5 Nm/3.7 ft-lb/44 in-lb	4 Hex Key	---
14	2	Washer	8 x 12 x1	---	---	---	---
15	1	Washer	6 x 10 x 1	---	---	---	---
16*	1 Kit	Forward Shock Reducer	8 x 22	Per shock manf.	---	Per Shock Manf.	Sold separately, per shock Manf.
17	1	Clevis Pin	ø15 - 18L	Grease OD only	---	---	---
18	1	Chainring Bolt	M8 x 0.75 - 16L	Loctite 242 Blue	10 Nm/7.4 ft-lb/88 in-lb	5 Hex Key	Horsethief model only
19*	3	Button-Head Cap Screw	M5 x 0.8 - 20L	Loctite 242 Blue	Not specified	T25	---
20*	5	Washer	M5 typical	---	---	---	Replacement kit sold separately
21*	6	Housing Guide Clip	YF-W01	---	---	---	---
22*	1	Spacer	5 x 10 x 3w	---	---	---	---
23*	1	FD Bracket	26 Offset	---	---	---	---
24*	1	Low-Head Socket Cap Screw	M6 x 1.0 - 10L	Grease	5 Nm/3.7 ft-lb/44 in-lb	4 Hex Key	Sold separately
25*	1	FD Blank Cover	SF/HT Carbon	---	---	---	---
26*	1	T/T Housing Guide	---	---	---	---	---
27*	1	Flat-Head Cap Screw	M5 x 0.8 - 16L	Grease	4 Nm/3 ft-lb/35 in-lb	3 Hex Key	Sold separately
28*	1	Downtube Protector	VLF-214	Clean frame	---	---	Sold separately
29*	1	Chainstay Protector	VLF-213	Clean frame	---	---	Sold separately
30*	2	Bottle Cage Bolts	M5 x 0.8 - 20L	Grease	4 Nm/3 ft-lb/35 in-lb	4 Hex Key	Sold separately

142/148 SPLIT PIVOT SERVICE KIT INSTRUCTIONS

SPEARFISH, REDPOINT, HORSETHIEF, PONY RUSTLER, & DEADWOOD

Figure 8 **DEADWOOD
PIVOT DETAIL & TORQUE SPEC**



OD = outer diameter, unthreaded portion
ID = inner diameter, threaded or unthreaded

* Starred items are NOT included in the Spearfish/Redpoint/Horsethief/
Pony Rustler Split Pivot Service Kit. They must be ordered separately.
Measurements are in millimeters unless noted otherwise.

Item #	Qty.	Description	Size/Spec	Preparation	Torque	Tool Required	Notes
1	1	Main Pivot Pin	ø17 - 66L	Grease OD only	---	8 Hex Key	---
2	1	Main Pivot Bolt	M12 x 1.25 - 25L	Loctite 242 Blue	20 Nm/14.7 ft-lb/177 in-lb	6 Hex Key	---
3*	4	Bearing - MR17287	17 x 28 x 7w	Grease for PressFit	---	Bearing Press/Bearing Puller	Sold separately (BB1728)
4	1	Control Link Pin	ø12 - 59L	Grease OD only	---	6 Hex Key	---
5	1	Control Link Nut	M10 x 1.0	Loctite 242 Blue	7 Nm/5 ft-lb/62 in-lb	15 mm Wrench/Socket -	---
6*	6	Bearing - 6801	12 x 21 x 5w	Grease for PressFit	---	Bearing Press/Bearing Puller	Sold separately (BB8801)
7	2	Floating Pivot Bolt	M12 x 1.25 - 18L	Loctite 242 Blue	13 Nm/9.6 ft-lb/115 in-lb	5 Hex Key	---
8*	1	Hanger	Split Pivot	---	---	---	Sold separately (FS2322)
9	1	Axle Stud, driveside	M12 x 1.75	Grease OD & ID	---	---	Compatible thru-axle size is ø12, L = 182, TP = 1.75, TL = 20
10	1	Axle Stud, non-driveside	---	Grease OD & ID	---	---	---
11	2	Axle Nut	M17 x 1.0	Loctite 242 Blue	16 Nm/11.8 ft-lb/141 in-lb	22 mm Cone Wrench/Socket	Socket Top Cap Tool available separately
12	1	Forward Shock Pin	ø8 x 30L	Grease OD only	---	5 Hex Key	---
13	1	Forward Shock Bolt	M6 x 1.0 - 12L	Loctite 242 Blue	5 Nm/3.7 ft-lb/44 in-lb	4 Hex Key	---
14	2	Washer	8 x 12 x 1	---	---	---	---
15	1	Washer	6 x 10 x 1	---	---	---	---
16*	1 Kit	Forward Shock Reducer	8 x 22	Per shock manf.	---	Per Shock Manf.	Sold separately, per shock Manf.
17	1	Rear Shock Pin	ø8x55L, M8x1.25	Grease OD only , threads + Loctite 242 Blue	7 Nm/5 ft-lb/62 in-lb	---	Spearfish/Deadwood models only
18	1	Rearward Shock Reducer	Ø8 x 38	Per shock manf.	---	---	Sold separately, per shock Manf.
19*	3	Button-Head Cap Screw	M5x0.8 - 20L	Loctite 242 Blue	Not specified	T25	---
20*	6	Washer	M5 typical	---	---	---	Replacement kit sold separately
21*	5	Housing Guide Clip	YF-W01	---	---	---	---
22*	1	FD Bracket	29 Offset	---	---	---	---
23*	1	Low-Head Socket Cap Screw	M6x1.0 - 10L	Grease	5 Nm/3.7 ft-lb/44 in-lb	4 Hex Key	Sold separately
24*	1	FD Blank Cover	SF/HT Carbon	---	---	---	---
25*	1	T/T Housing Guide	---	---	---	---	---
26*	1	Flat-Head Cap Screw	M5x0.8 - 16L	Grease	4 Nm/3 ft-lb/35 in-lb	3 Hex Key	Sold separately
27*	1	Downtube Protector	VLF-214	Clean frame	---	---	Sold separately
28*	1	Chainstay Protector	VLF-XXX	Clean frame	---	---	Sold separately
29*	1	Housing Port Blank	938	---	---	Flat blade screw drive/Pliers	Replacement kit sold separately
30*	1	Housing Port Grommet	939	---	---	Flat blade screw drive/Pliers	---
31*	2	Bottle Cage Bolts	M5x0.8 - 20L	Grease	4 Nm/3 ft-lb/35 in-lb	4 Hex Key	Sold separately



142/148 SPLIT PIVOT SERVICE KIT INSTRUCTIONS

SPEARFISH, REDPOINT, HORSETHIEF, PONY RUSTLER, & DEADWOOD

Ongoing Maintenance

- Check pivots before every ride, tighten to specified torque as needed. Applying thread lock as described helps to prevent bolts from loosening during normal riding conditions
- Inspect pivot hardware for wear/damage at least annually. If pivot hardware becomes damaged, stripped, or develops play that cannot be eliminated with the proper torque specification, replace the affected part(s)
- Check bearings for smooth operation at least annually (more often depending on frequency and riding environment). If bearings are rough, seized, or there is slop between the inner and outer bearing race, replace as needed

Warranty Information:

Proof of purchase is required before a warranty claim is processed. Salsa Cycles therefore strongly encourages warranty registration at salsacycles.com. Failure to register will not affect consumer rights under the limited warranty stated above, so long as the consumer can show in a reasonable manner proof of original ownership and the date the Salsa Cycles product was purchased.

If you have any questions contact warranty@salsacycles.com

SALSA CYCLES

6400 West 105th Street, Bloomington, MN 55438

Tel: 877-MOTO-ACE Fax: 952-983-6210

www.salsacycles.com